



jordan fishwick

Plot 68 Hayfield Road, New Mills, SK22

Guide Price £179,950



Hayfield Road High Peak SK22 4HY

£179,950



The Property

Own New Rate Reducer Available- The Oakmere C is a stylish 2 bedroom apartment with a FIRST FLOOR location.

This stylish apartment is an ideal choice for first time buyers or young professionals who are looking to take that first step onto the property ladder. Featuring the highest specifications, these apartments are designed with practicality in mind.

You'll find an open plan lounge/dining space, with plenty of space for dining, relaxing and socialising. The adjoining kitchen is conveniently located, especially for when you are entertaining guests. Buyers will love the opportunity to choose their own luxury fitted kitchen and worktops and The Oakmere's light and airy feel really helps to make the most of the living space.

You'll find two good sized bedrooms to choose from, as well as a fully fitted bathroom with a choice of Porcelanosa tiles. If you're looking to work from home, you could comfortably set up in the second bedroom.



- First floor location with Parking Space
- 2 Bedrooms
- Luxury Fitted Kitchen with choice of finishes
- Choice of Worktops to Kitchen with Matching Upstands
- Open plan living area
- Choice of Porcelanosa tiles in bathroom
- USB sockets to kitchen, bedroom and lounge areas.
- Ideal starter home
- 10 year NHBC warranty
- 2 year builders warranty

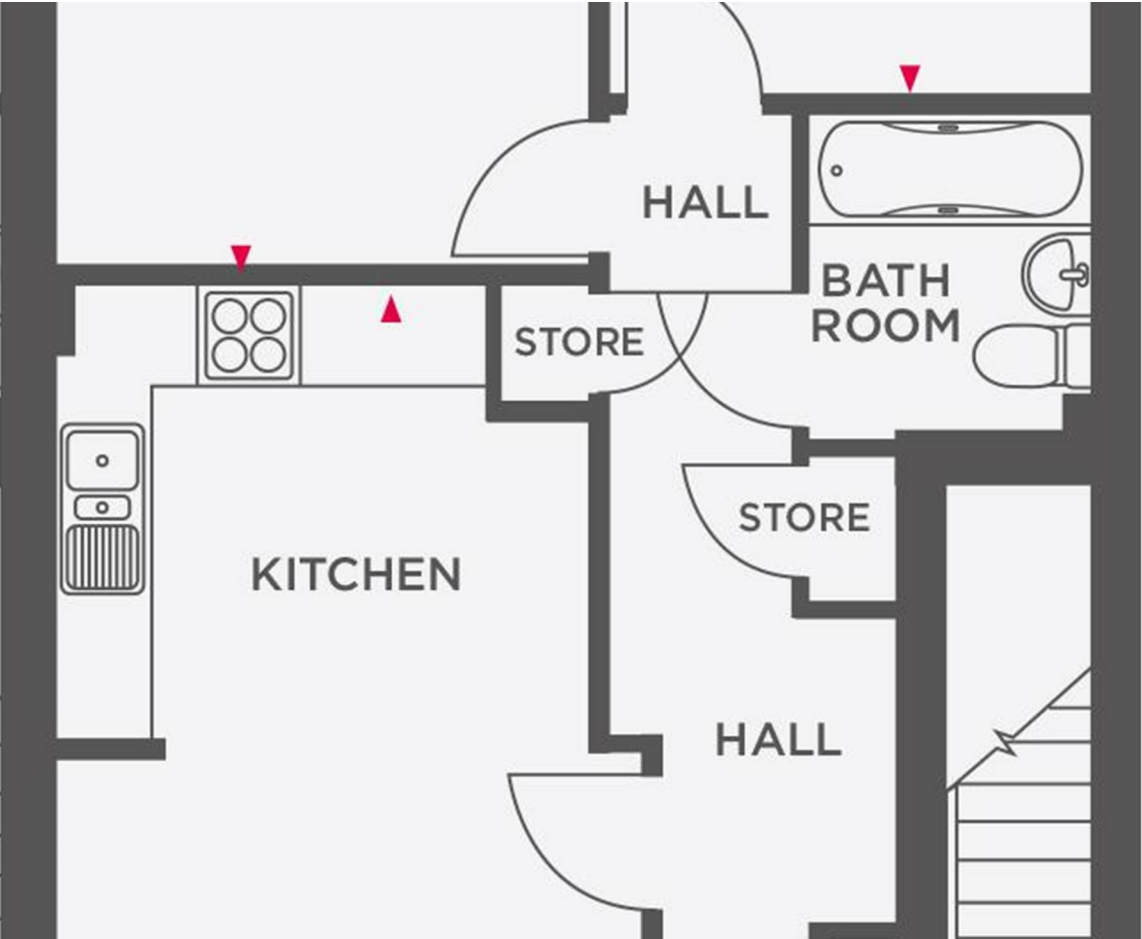


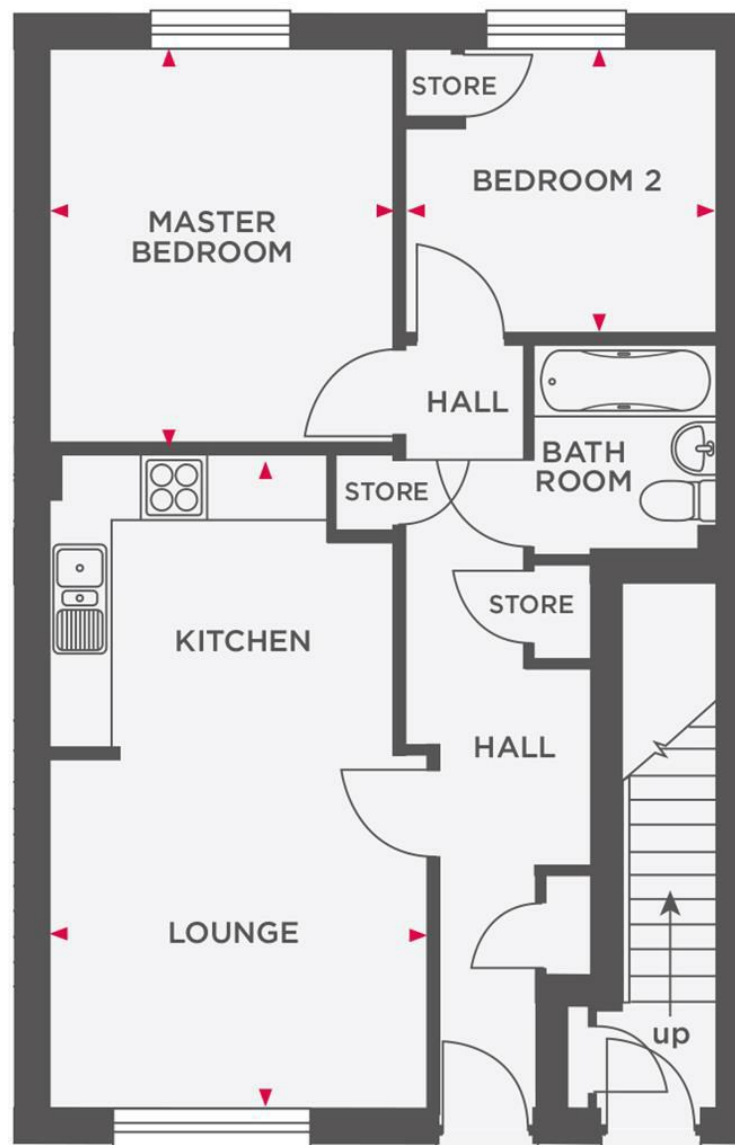
Energy Efficiency Rating

	Current	Potential
Very energy efficient - lower running costs		
(92 plus) A		
(81-91) B		
(69-80) C		
(55-68) D		
(39-54) E		
(21-38) F		
(1-20) G		
Not energy efficient - higher running costs		

England & Wales

EU Directive 2002/91/EC





These particulars are believed to be accurate but they are not guaranteed and do not form a contract. Neither Jordan Fishwick nor the vendor or lessor accept any responsibility in respect of these particulars, which are not intended to be statements or representations of fact and any intending purchaser or lessee must satisfy himself by inspection or otherwise as to the correctness of each of the statements contained in these particulars. Any floorplans on this brochure are for illustrative purposes only and are not necessarily to scale.

Offices at: Chorlton, Didsbury, Disley, Hale, Glossop, Macclesfield, Manchester Deansgate, Manchester Whitworth Street, New Mills, Sale, Wilmslow and Withington